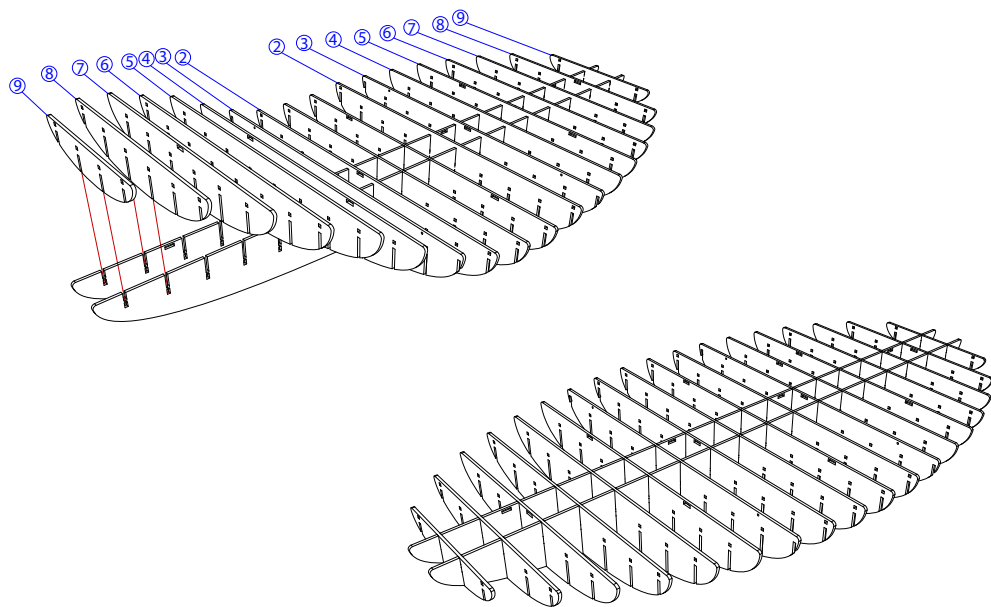
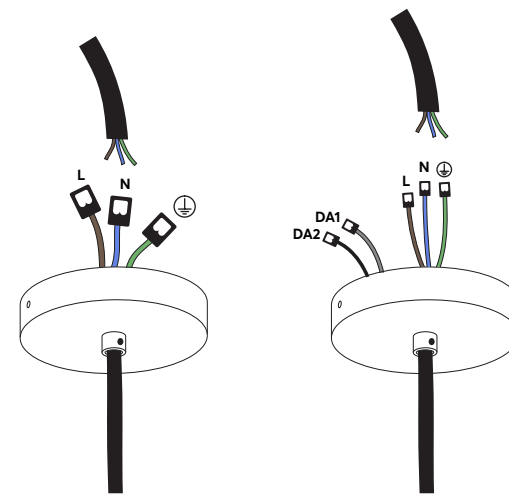


- 1** Take parts A and 1  
connect in the middle.  
Press until the parts are flush



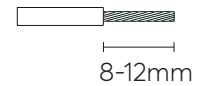
- 2** Take parts 2 up to 9.  
connect in order to the A beams  
Press until the parts are flush



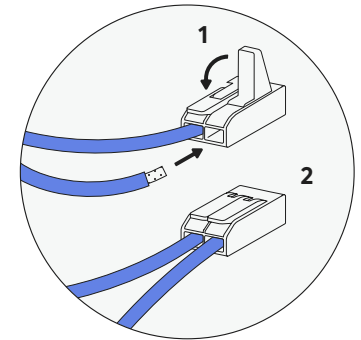
**Trailing edge**

**DALI**

Strip the cable

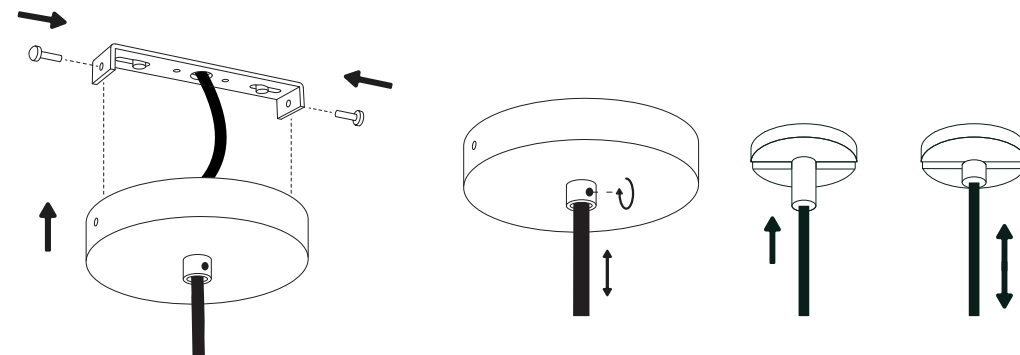


[www.wago.nl](http://www.wago.nl)  
(for more info)



**10**

The above diagram shows two dimming options (DALI and Trailing Edge).  
Strip 8-12mm of the cable, exposing the wires.  
Insert the electrical cable into the wago connector and flip closed.



**11**

Connect the ceiling  
canopy to the bracket  
using 2 screws.

**12**

Fine adjust the cable using the side  
screw. Adjust the tensioners as shown  
above. **Your light is now ready to use!**

**Thank you for your purchase!**

**Please read this manual carefully to ensure a safe and correct install of your light.**

- The manufacturer is not responsible for damage caused by incorrect installation.
- Always turn the power off before installation, carry out maintenance or repairs.
- If in doubt, contact a qualified electrician.
- Keep light away from liquid or flammable objects.
- When installing, make sure cables are not crushed, damaged or corroded.
- If a cable is damaged, it must be replaced by a trained professional.
- This product contains an integrated LED light source, which can only be replaced within its 2 year warranty.



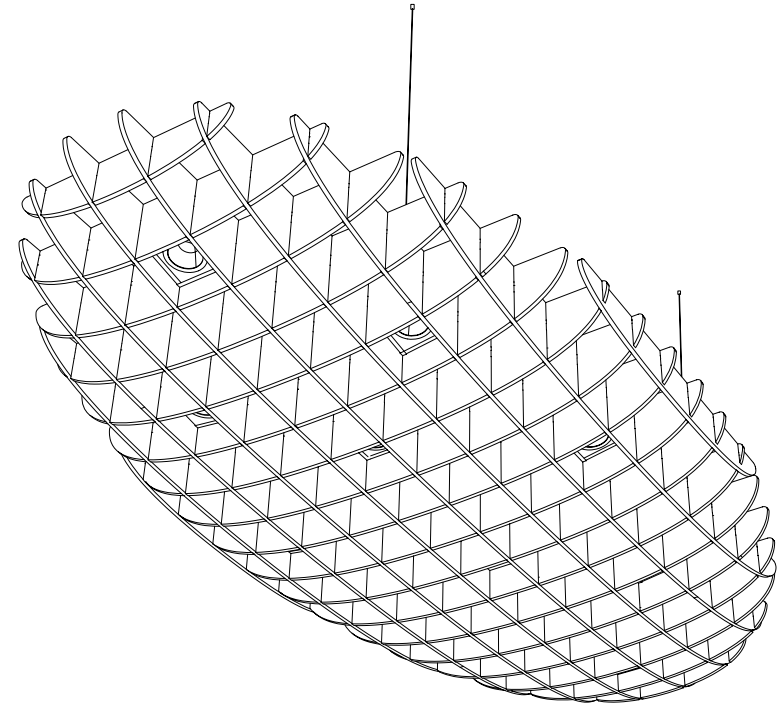
Assembled inside box  
Material: PET Felt  
Ceiling Rose: Black Metal  
Weight: Cloud light Oval: 9.9KG  
IP20  
CCT: 2700/3000/4000  
Dimming: Trailing Edge / DALI receiver

lumēnear

Zoeterwoudseweg 21D • 2321 GM Leiden • The Netherlands  
+31 (0)715352210 • [info@lumenear.com](mailto:info@lumenear.com) • [www.lumenear.com](http://www.lumenear.com)

# lumēnear

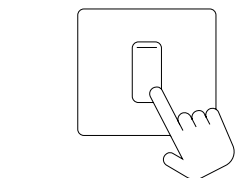
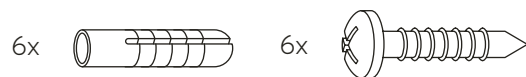
## Acoustic Lighting



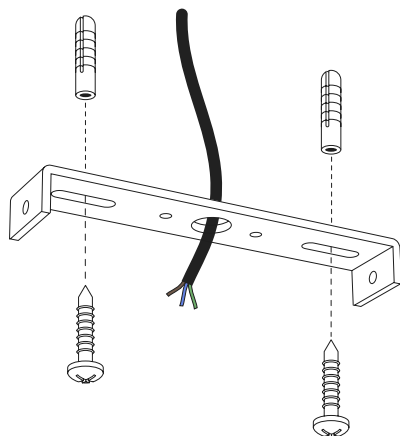
## Cloud Oval

### Installation Guide

## You Will Need (not included)



Turn the power off  
before starting!

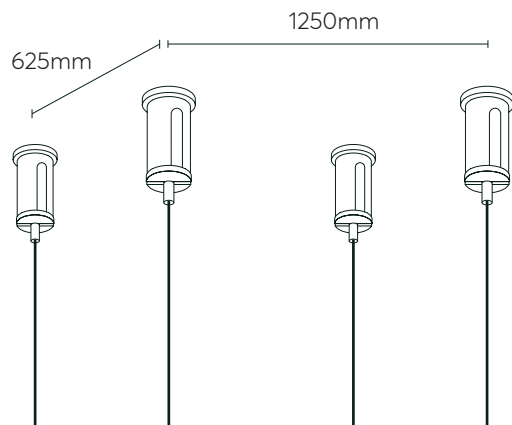
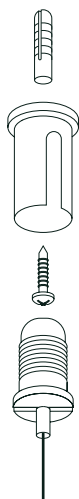


7

Before starting, please  
read the guidance on  
the back of this leaflet.

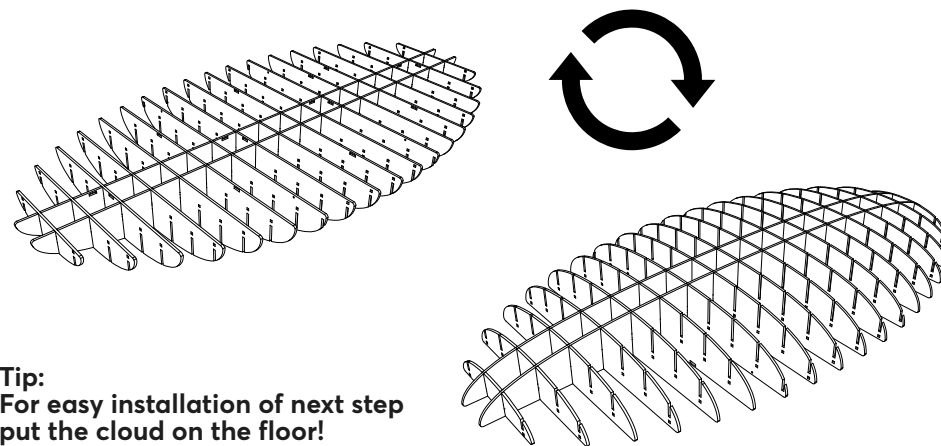
8

Drill holes and insert wall plugs. Line  
up the bracket, thread cable through  
and screw in place.



9

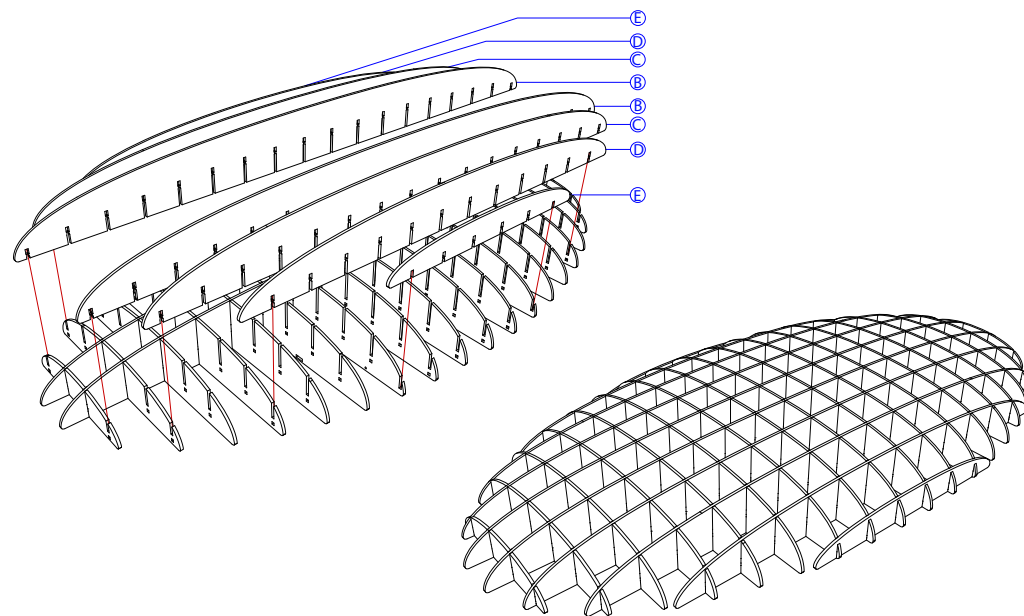
Screw the tensioners into the ceiling before adjusting the length, as shown  
in the above diagram.



**Tip:**  
For easy installation of next step  
put the cloud on the floor!

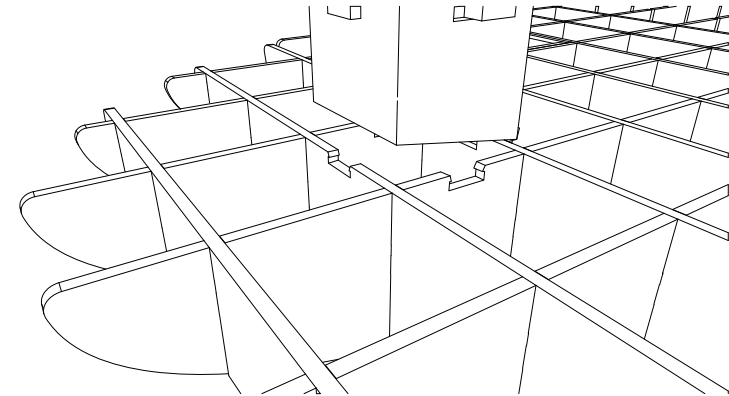
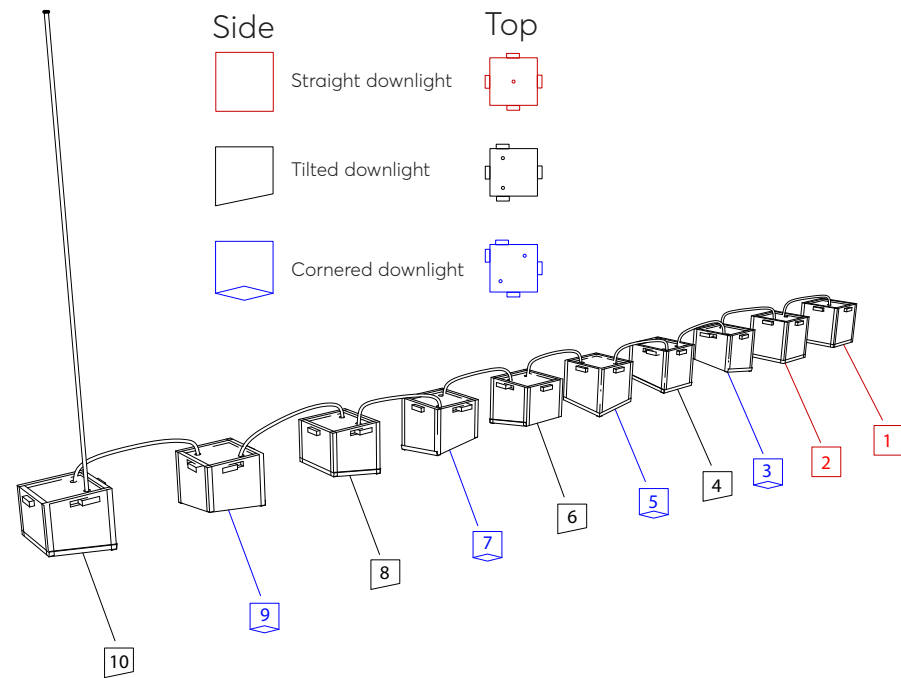
3

Flip the Cloud so the flat part faces downwards.

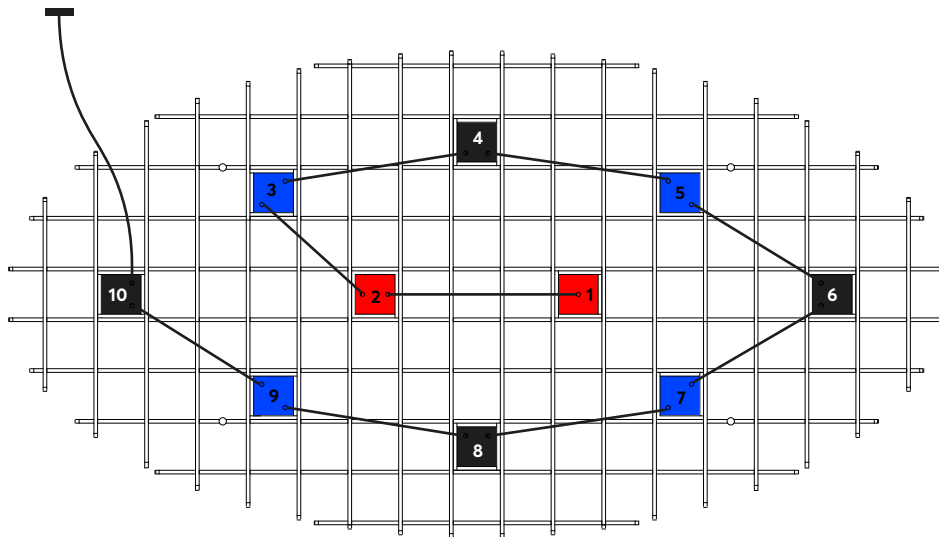


4

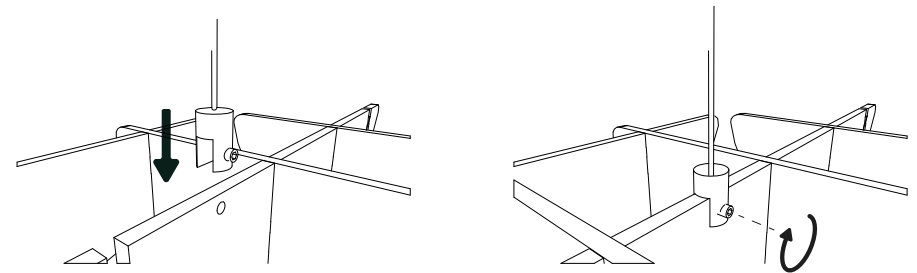
Take parts B, C, D, E.  
connect in order to the beams  
Press until the parts are flush



- 5 Press the boxes in the grids where you find the notches. press until the boxes are flush



- 4 Insert the chain of spotlight-boxes into its pre-made holes. Following the above showed diagram. you have **straight boxes**, **(middle) tilted boxes** (outsides) and **angled boxes** (corners)



- 6 Connect the four sheet clamp with side screw over the pre-cut holes in the baffle. these will be the suspension points.